

THIS IS TO CERTIFY THAT ON THE 22<sup>ND</sup> DAY OF OCT. 19 94. I SURVEYED THE PROPERTY SHOWN ON THIS PLAT. AND THAT THE TITLE LINES AND THE WALLS OF THE BUILDING IF ANY ARE SHOWN HEREON.  
 PLAT - NOT FOR RECORDATION

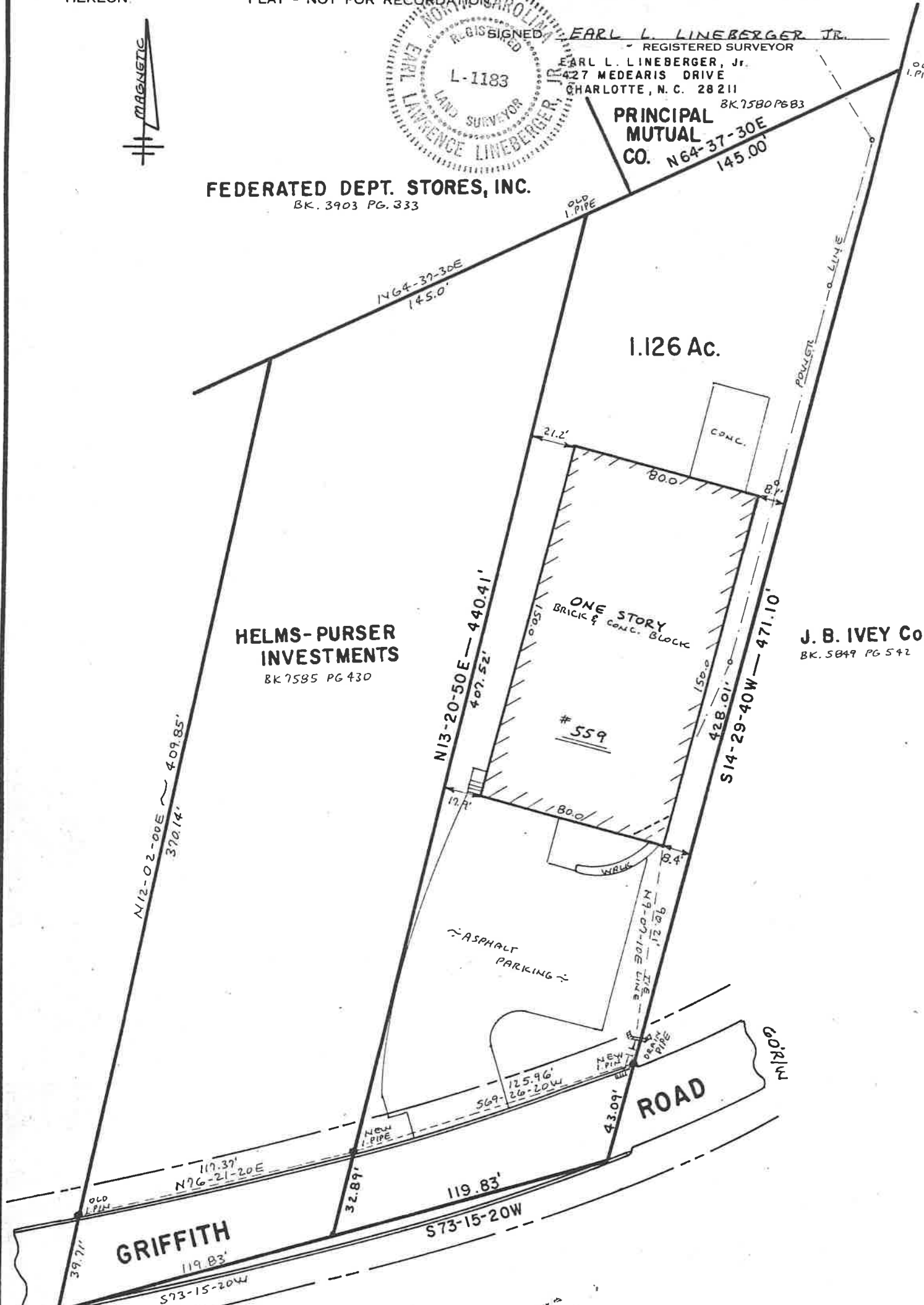


SIGNED EARL L. LINEBERGER JR.  
 REGISTERED SURVEYOR  
 EARL L. LINEBERGER, JR.  
 427 MEDEARIS DRIVE  
 CHARLOTTE, N. C. 28211  
 BK 7580 PG 83



FEDERATED DEPT. STORES, INC.  
 BK. 3903 PG. 333

PRINCIPAL MUTUAL CO.  
 N 64-37-30E 145.00'

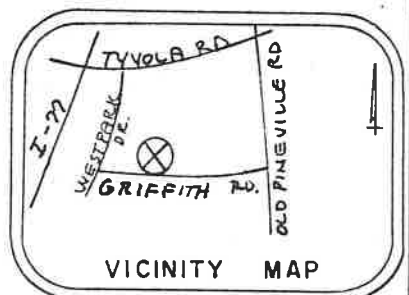


HELMS-PURSER INVESTMENTS  
 BK 7585 PG 430

J. B. IVEY Co.  
 BK. 5849 PG 542

PHYSICAL SURVEY OF 559 GRIFFITH ROAD CHARLOTTE, N.C.

THE PROPERTY OF RHS PROPERTIES  
 SCALE 1"=50'  
 MAP 800 K PAGE \_\_\_\_\_  
 DEED BOOK 4600 PAGE 814



DUNCAN-PARNELL, INC. CHARLOTTE, NC 800-768-7788 572702