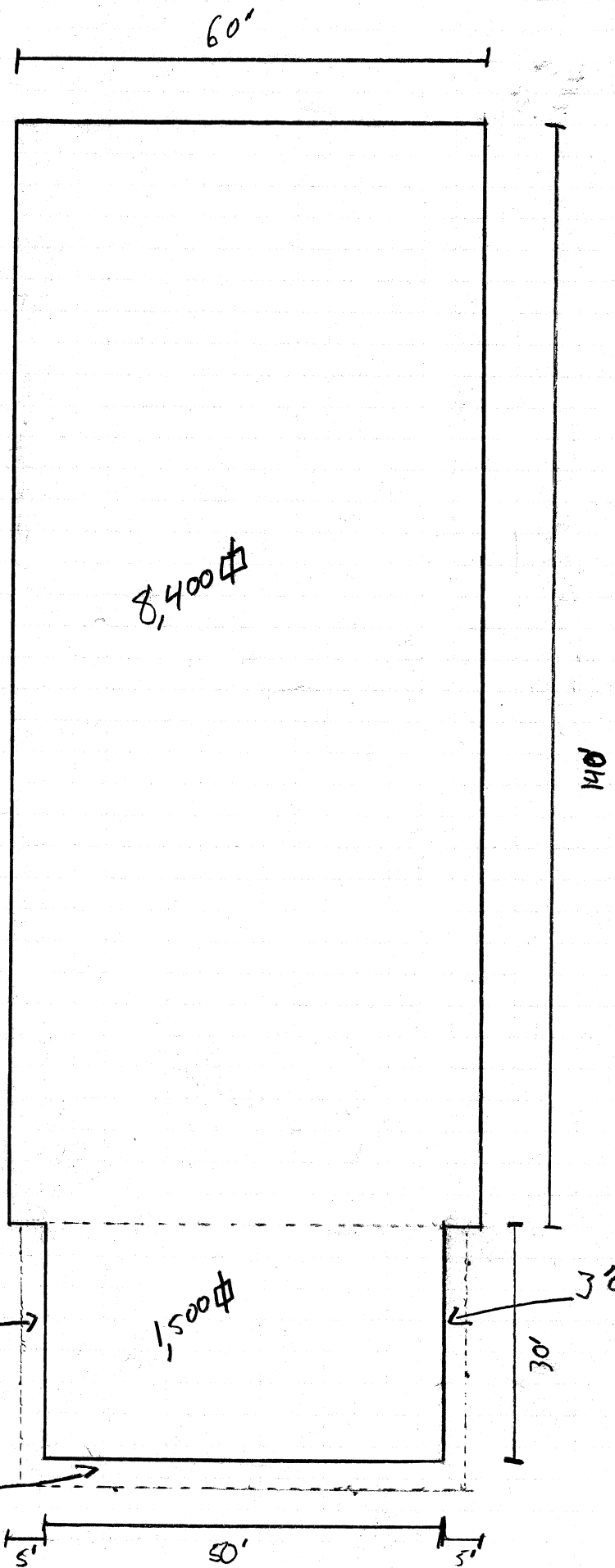


Entire Building
Measure & Calculations

$$\begin{array}{r}
 8,400 \\
 + 1,500 \\
 \hline
 9,900 \text{ \#} \text{ total enclosed} \\
 + 404 \text{ \#} \text{ overhang} \\
 \hline
 10,304 \text{ \#} \text{ inside} \\
 \text{drip line}
 \end{array}$$



$$\begin{array}{r}
 56 \\
 \times 34 \\
 \hline
 1,904 \\
 (1,500) \\
 \hline
 404
 \end{array}$$