

150'

120'

$$\begin{array}{r} 150 \\ \times 75 \\ \hline 11,250 \\ (68.5) \\ \hline \approx 11,182 \phi \end{array}$$
 heated warehouse

$$\begin{array}{r} 125 \\ \times 120 \\ \hline 15,000 \\ (3,433) \\ \hline \approx 11,567 \phi \end{array}$$
 air conditioned production

11,182 warehouse
 11,567 production
 3,433 office
26,182 ϕ total

3,433 ϕ
 office + digital production

FRONT

125'

NOT TO SCALE

68.5 ϕ per survey

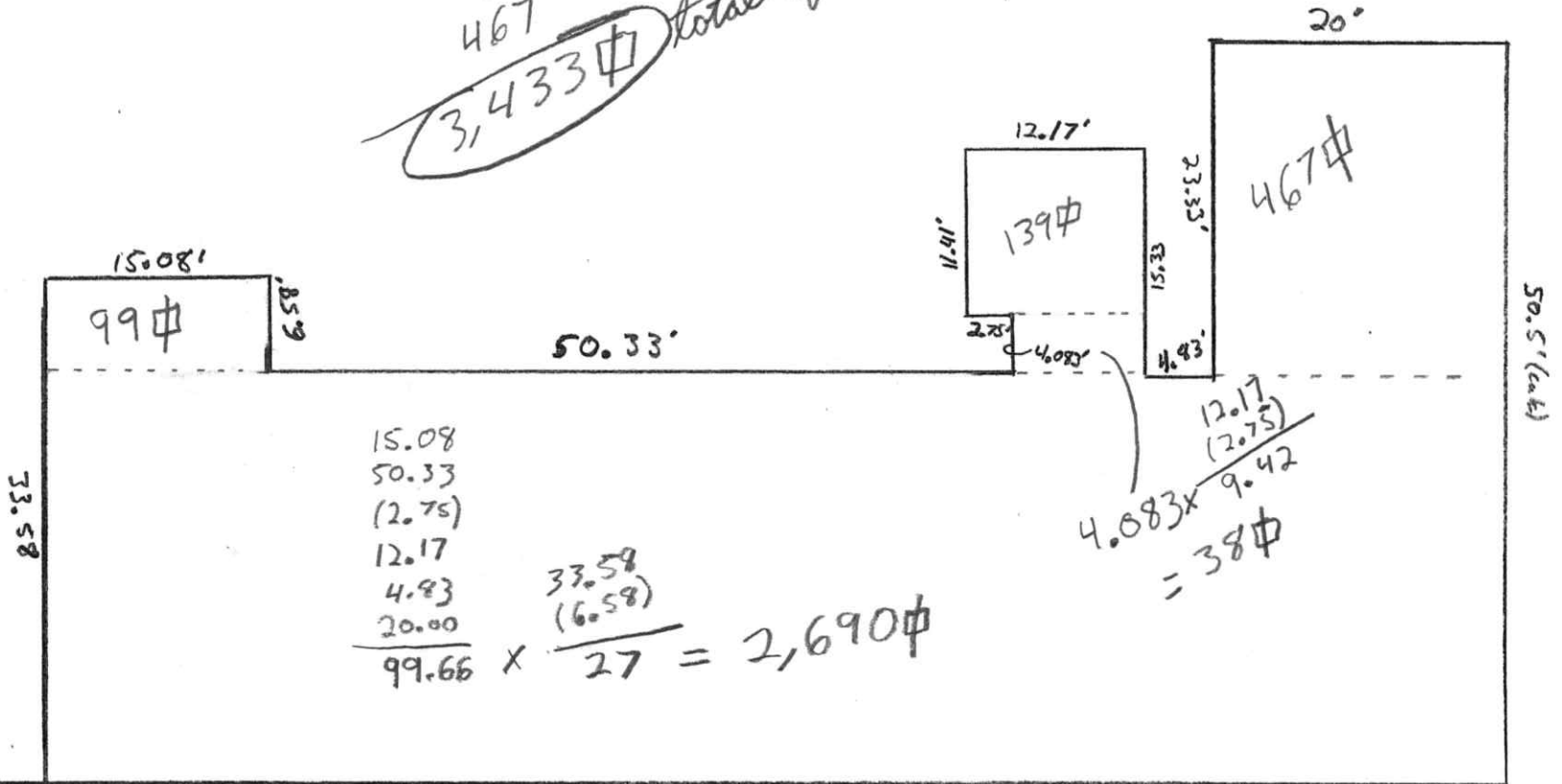
75'

NOT TO SCALE

office/digital perimeter measurement
area calculation

99
2,690
139
38
467

3,433 Φ total office + digital production



$$\begin{array}{r}
 15.08 \\
 50.33 \\
 (2.75) \\
 12.17 \\
 4.83 \\
 20.00 \\
 \hline
 99.66
 \end{array}
 \times
 \begin{array}{r}
 33.58 \\
 (6.58) \\
 \hline
 27
 \end{array}
 = 2,690 \Phi$$

$$\begin{array}{r}
 12.17 \\
 (2.75) \\
 \hline
 9.42
 \end{array}
 \times 4.083 = 38 \Phi$$

50.5 (L.A.)